



Heartland POLYMER CABINETS

*Hand-Crafted Interior & Exterior
Weatherproof Cabinets & Furniture*



2025 CABINET CATALOG



Outdoor Kitchen

Our History:

Heartland Polymer Cabinets was founded in 2012 with a strong commitment to quality craftsmanship and durability. From the very start, the company has prioritized creating products that last a lifetime while staying transparent to customer needs and preferences.

Over the years, Heartland Polymer Cabinets has expanded its offerings, providing both face frame and frameless cabinets suitable for a variety of spaces. These cabinets are ideal for kitchens (indoor and outdoor), bathrooms, garages, kennels, barns, shops, basements, and pool houses, ensuring a functional, long-lasting solution for any environment. Customizable for your space.

Garage Cabinets



STANDARD FEATURES



Hall Bench

Cabinet Features

- Three Standard Door/Drawer Front Styles Available.
- ½" Overlay on Doors & Drawers
- ¾" Accent Tops on Overhead Cabinets
- All door compartments include at least one shelf (excluding sink base cabinets).
- Fillers available in ⅛" increments.
- Salice soft close hinges.
- Blum undermount drawer glides.

Customization

- Custom sizes available in all cabinets. Give us a call for more information.
- Custom Door & Drawer Fronts available upon request.

Laundry Room



Bathroom



OUR ADVANTAGE:

- Easy to Clean (and even Pressure Wash!)
- Resists Staining
- Ideal for High Moisture Areas
- Will Not Delaminate, Rot, or Swell
- Resists Scratches, Scuffing, and Wear
- Never Needs Repainting or Refinishing
- Solid Color Throughout the Material
- Upgradable to King MicroShield® with an Antimicrobial Technology for Protecting Against Bacteria, Algae and Fungi

Heartland Polymer Cabinets are great for:

- Outdoor Kitchens
- Pool Areas
- Indoor Cabinets
- Exterior Cabinets
- Locker Rooms
- Healthcare Offices
- Concession Stands
- And much more!



OUR FIVE STEP ORDER PROCESS



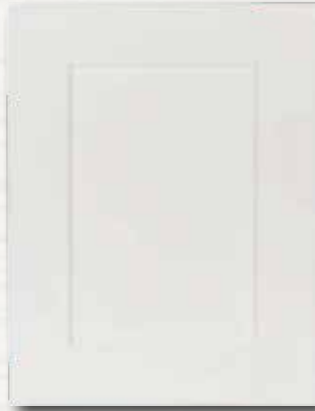
Ordering cabinets and accessories shouldn't be complicated. So we've created a simple 5 step order process for all orders.

1. Choose Door & Drawer Style(s)
2. Choose Hardware Components (Please specify all knob locations on all doors where doors can have a knob on either side.)
3. Choose Cabinet Color
4. Choose Cabinet Configuration
5. Place Order & HPC Review

Shaker Style



Beaded



Kingston

Choose the same design for both doors and drawers or mix-and-match as desired.

Call for additional options.

Raised Panel & Standard Door Style



Monroe



Urban



Alpha



Crossroads

2. HARDWARE COMPONENTS & CABINET CONSTRUCTION

Since the cabinets are built with HDPE, the traditional joinery methods are not an option. Cabinets are fastened using pocket screws, then the seams are reinforced using injection welding wherever possible. The welds and screws are carefully placed for maximum hold and minimum visibility.

We offer two standard hardware component lines for our cabinets.

1. Stainless Hardware Components

- Stainless Steel Screws
- Stainless Steel Soft-Close Door Hinges
- Outdoor Rated Soft-Close Drawer Glides

2. Soft-Close Hardware Components

- Stainless Steel Screws
- Soft-Close Door Hinges
- Soft-close Drawer Glides

Starboard ST Color Choices



Ycom Woodgrain Color Choices



4. CABINETS

Browse through the following pages and specify which cabinets you would like to order. Each cabinet has an item number that needs to be followed by the item width. All other items follow the same pattern for easy ordering.

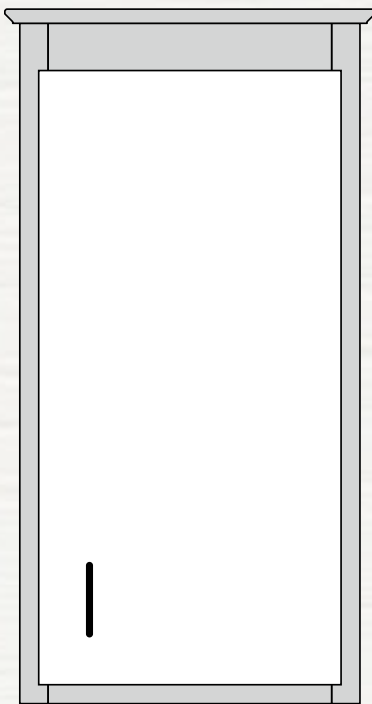
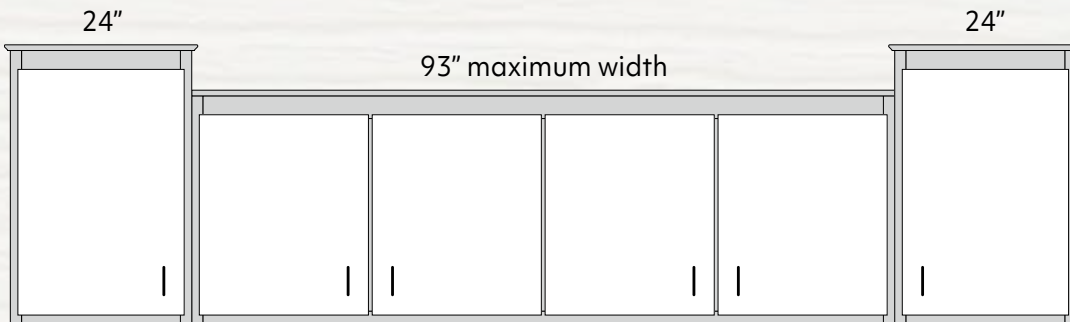
EXAMPLE: If you want an OH-336 (Overhead Cabinet, 3 Doors, 36" Height) in a 30" width, the item code would be OH-336-30.

5. PLACE YOUR ORDER & HPC REVIEW

Give us a call to place your order. We'll work with you and take your order and project plan. After your phone call, we'll review the details and ensure that all details are covered. Finally, we'll contact you to finalize the order and give you a completion date. It's just that easy!

Special Notes on Overhead Cabinets

- All Overhead Cabinets available in 12" or 15" Depth.
- Cabinets exceeding 93" in length need to be offset in height and/or depth to avoid splices due to material length limitations. (See example below).



OH-136

OH-136 | 1 Door

Door is 31½" high. Includes 2 adjustable shelves. For door internal width, subtract 3" from overall width.

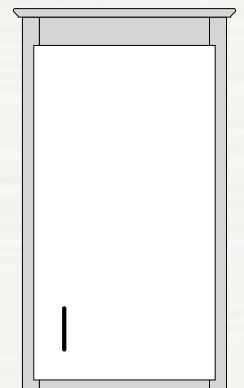
Dimensions: 36" high x 12" deep. (15" depth available)

Available Widths:

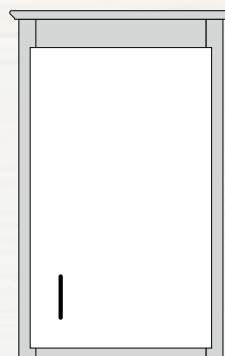
| 9 | 12 | 15 | **18** | 21 | 24 |

OH-133 | 1 Door

Same as OH-136, but is 33" high with 28½" door height. Includes 2 adjustable shelves.



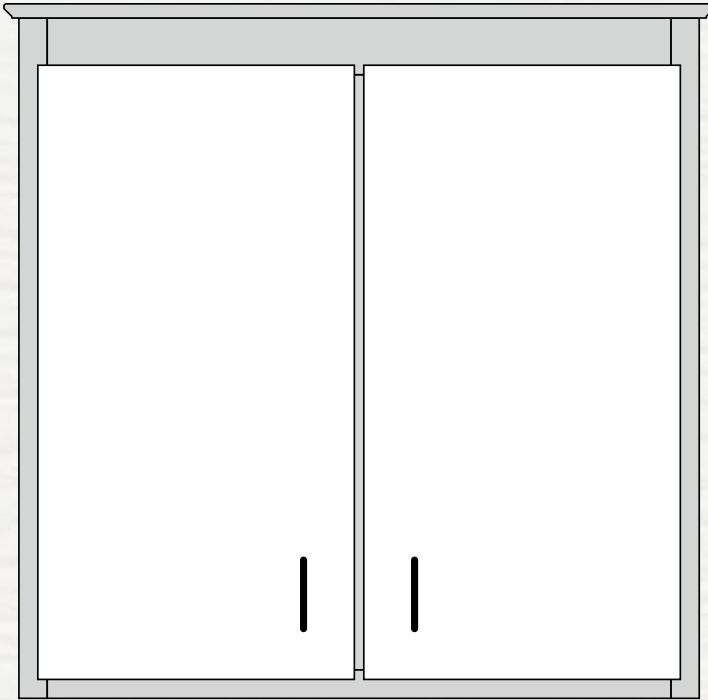
OH-133



OH-130

OH-130 | 1 Door

Same as OH-136, but is 30" high with 25½" door height. Includes 2 adjustable shelves.



OH-236

OH-236 | 2 Door

Butt doors are 31½" high. Includes 2 adjustable shelves. For door internal width, subtract 4½" from overall width and divide result by two.

Dimensions: 36" high x 12" deep. (15" depth available)

Available Widths:

| 24 | 27 | 30 | 33 | **36** | 39 | 42 | 45 |



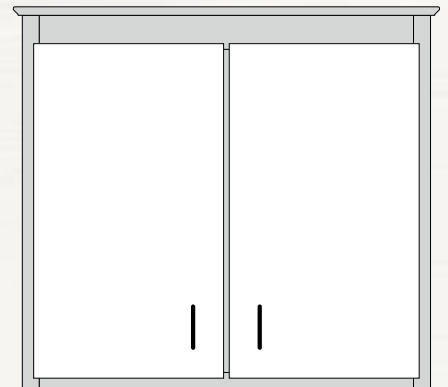
OH-230

OH-233 | 2 Door

Same as OH-236, but is 33" high with 28½" door height. Includes 2 adjustable shelves.

OH-230 | 2 Door

Same as OH-236, but is 30" high with 25½" door height. Includes 2 adjustable shelves.



OH-233



OH-336

OH-336 | 3 Door

Butt doors are 31½" high. Includes 2 adjustable shelves. For door internal width, subtract 6" from overall width and divide result by three.

Dimensions: 36" high x 12" deep. (15" depth available)

Available Widths:

| 48 | 51 | **54** | 57 |

OH-330 | 3 Door

Same as OH-336, but is 30" high with 25½" door height. Includes 2 adjustable shelves.



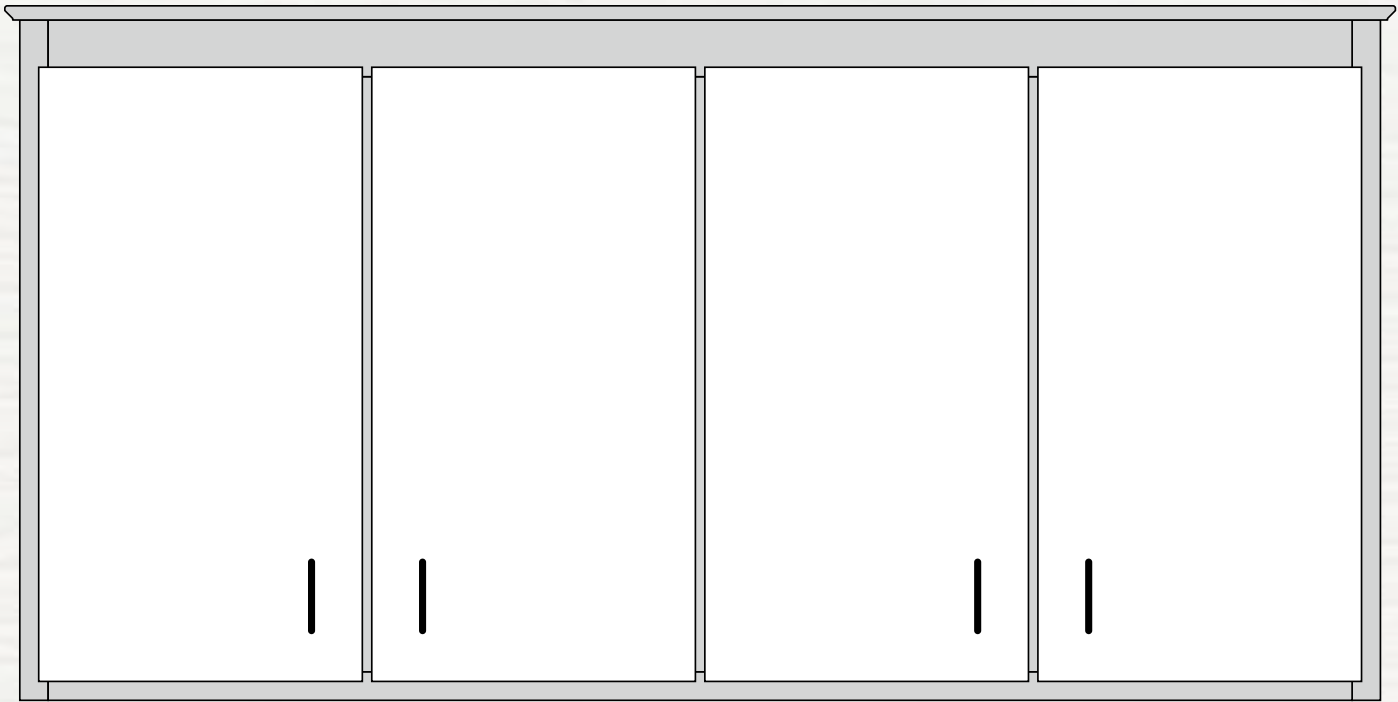
OH-330

OH-333 | 3 Door

Same as OH-336, but is 33" high with 28½" door height. Includes 2 adjustable shelves.



OH-333



OH-436

OH-436 | 4 Door

Butt doors are 31½" high. Includes 4 adjustable shelves. For door internal width, subtract 7½" from overall width and divide result by four.

Dimensions: 36" high x 12" deep. (15" depth available)

Available Widths:

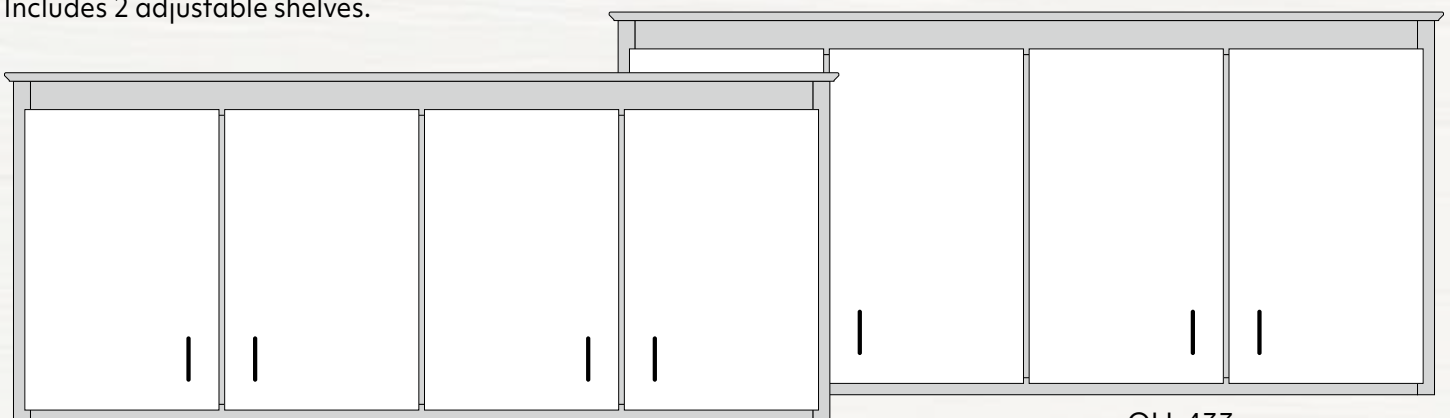
| 60 | 63 | 66 | 69 | 72 | 75 | 78 | 81 | 84 | 87 | 90 | 93 |

OH-430 | 4 Door

Same as OH-436, but is 30" high with 25½" door height. Includes 2 adjustable shelves.

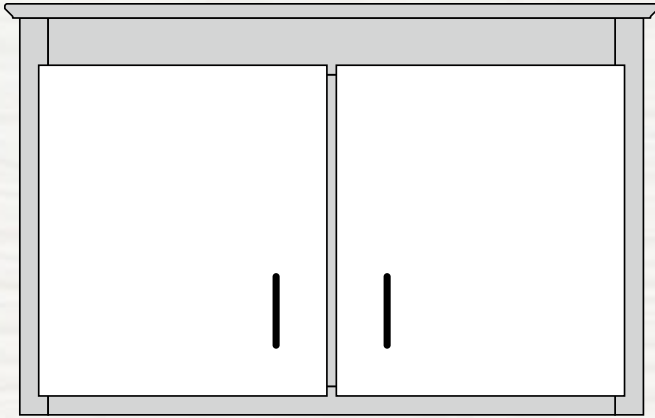
OH-433 | 4 Door

Same as OH-436, but is 33" high with 28½" door height. Includes 2 adjustable shelves.



OH-430

OH-433



OH-521 | 2 Door

Door openings are 16½" high. Includes 1 adjustable shelf. For door internal width, subtract 4½" from overall width and divide result by two.

Dimensions: 21" high x 12" deep. (15" depth available)

Available Widths:

| 24 | 27 | 30 | **33** | 36 | 39 | 42 |

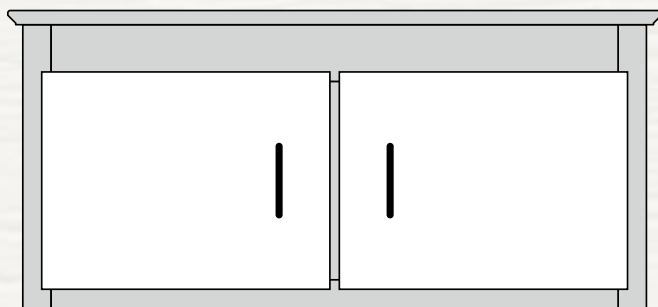
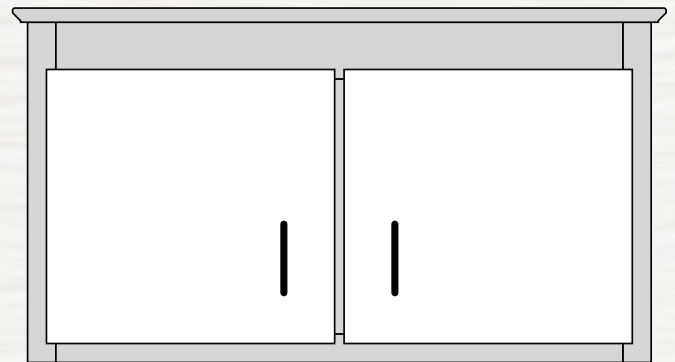
OH-621 | 2 Door

Door openings are 13½" high. For door internal width, subtract 4½" from overall width and divide result by two.

Dimensions: 18" high x 12" deep. (15" depth available)

Available Widths:

| 24 | 27 | 30 | **33** | 36 | 39 | 42 |



OH-721 | 2 Door

Door openings are 10½" high. For door internal width, subtract 4½" from overall width and divide result by two.

Dimensions: 15" high x 12" deep. (15" depth available)

Available Widths:

| 30 | **33** | 36 | 39 |

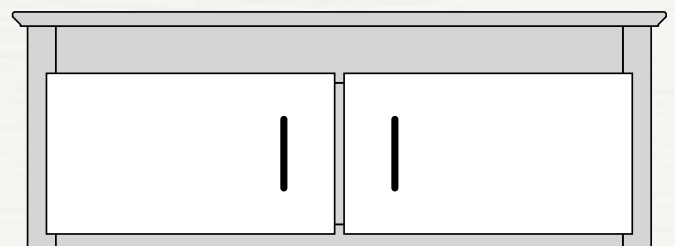
OH-821 | 2 Door

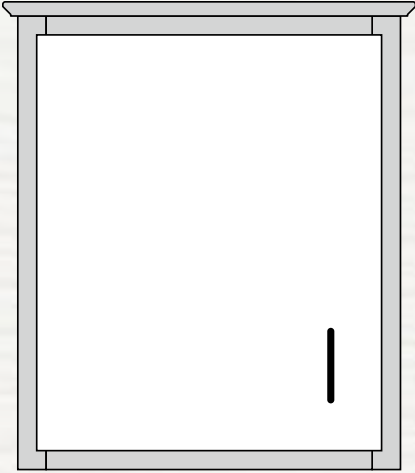
Door openings are 7½" high. For door internal width, subtract 4½" from overall width and divide result by two.

Dimensions: 12" high x 12" deep. (15" depth available)

Available Widths:

| 30 | **33** | 36 |

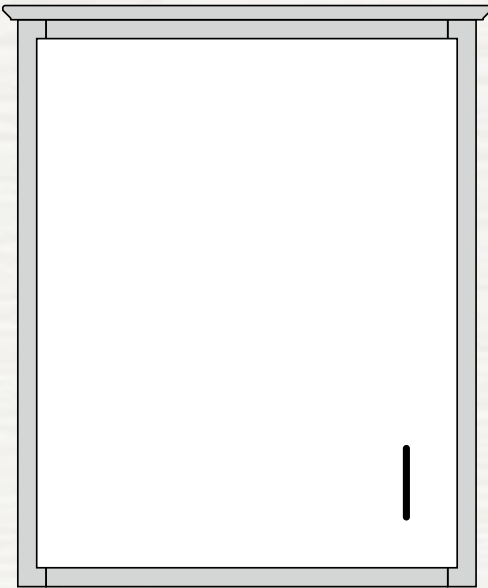




MC-1 | Medicine Cabinet

Door with mirror. Includes 2 adjustable shelves.

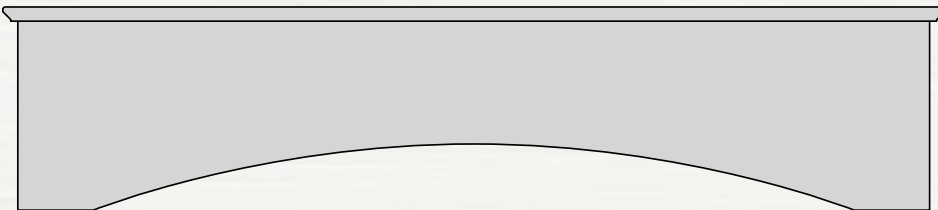
Dimensions: 24" high x 6" deep x 20¼" wide.



MC-2 | Medicine Cabinet

Door with mirror. Includes 2 adjustable shelves.

Dimensions: 30" high x 6" deep x 24¼" wide.



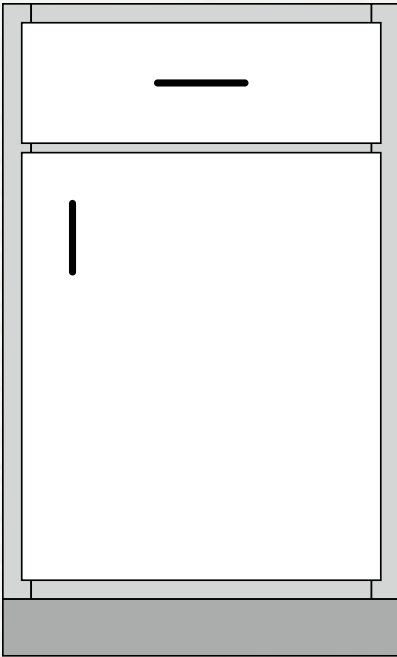
Valance

For use above windows or sinks.

Dimensions: 12" depth is standard. (15" depth available)

Available Widths:

| 36 | 39 | 42 | 45 | 48 | 51 | 54 | 57 | 60 | 63 |



KB-1 | 1 Drawer/1 Door

Includes 1 adjustable shelf. Drawer is 5½" high. Door opening is 20½" high. For drawer/door internal width, subtract 3" from overall width.

Dimensions: 34½" high x 24" deep.

Available Widths:

| 9 | 12 | 15 | 18 | **21** | 24 |

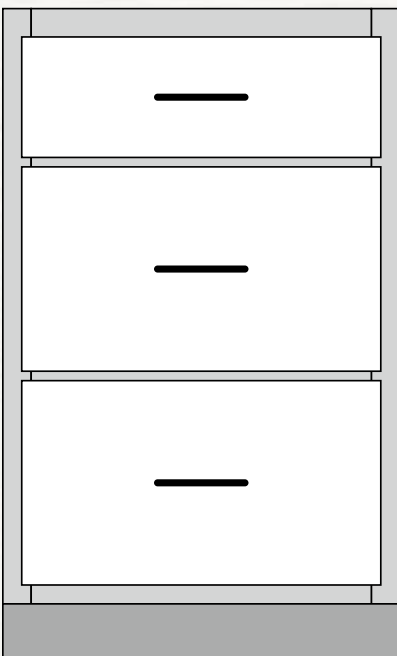
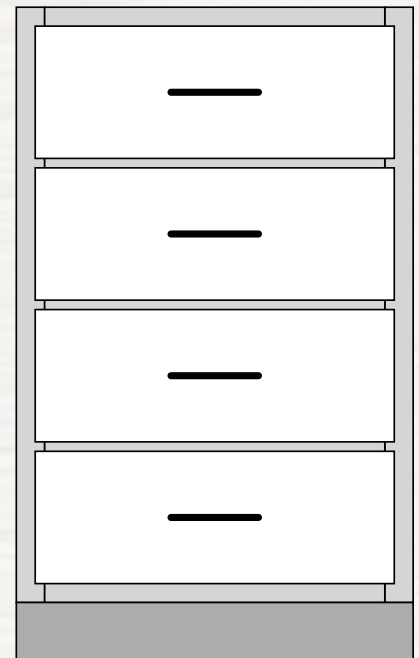
KB-2 | Four Drawer

Top two drawers are 5½" high. Bottom two drawers are 6½" high. For drawer/door internal width, subtract 3" from overall width.

Dimensions: 34½" high x 24" deep.

Available Widths:

| 9 | 12 | 15 | 18 | **21** | 24 | 27 | 30 | 33 | 36 |



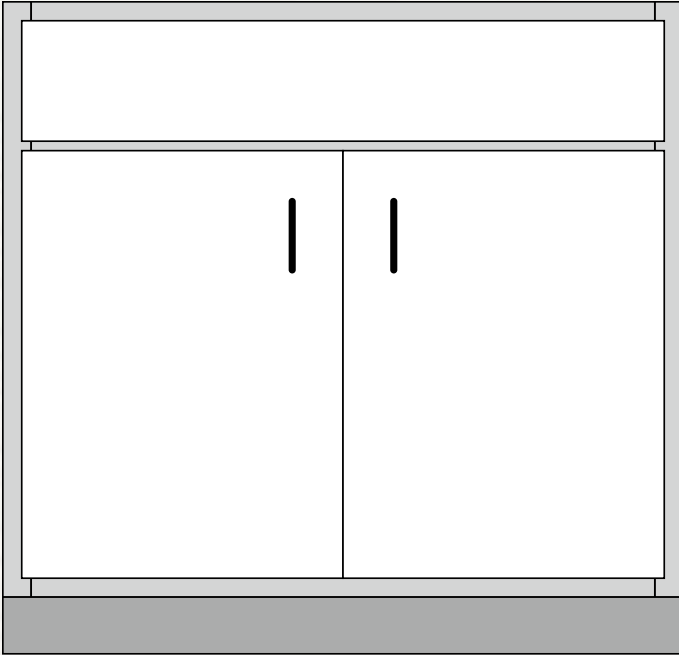
KB-3 | Three Drawer

Top drawer is 5½" high. Bottom two drawers are 10" high. For drawer/door internal width, subtract 3" from overall width.

Dimensions: 34½" high x 24" deep.

Available Widths:

| 9 | 12 | 15 | 18 | **21** | 24 | 27 | 30 | 33 | 36 |

**KB-4 | Sink Base**

False Drawer Front is 5½" high. Doors are 21½" high. For drawer/door internal width, subtract 3" from overall width.

Dimensions: 34½" high x 24" deep.

Available Widths:

| 33 | **36** | 39 | 42 |

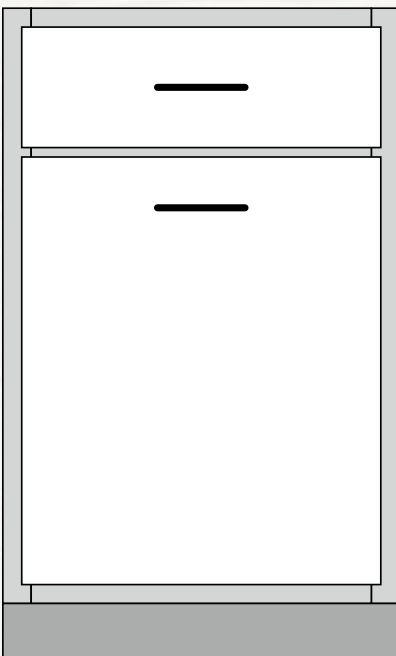
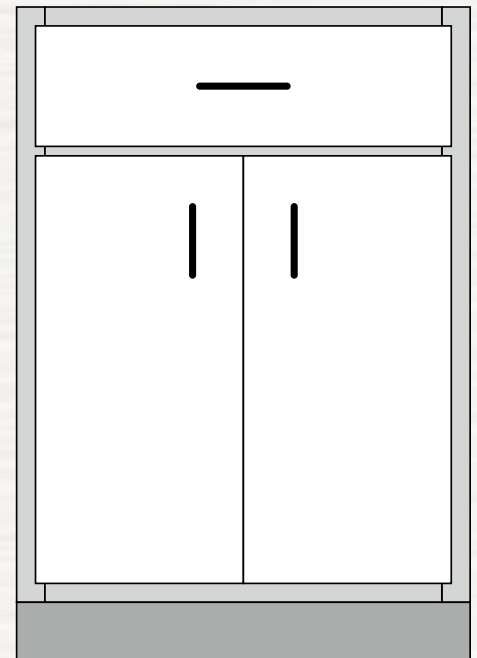
KB-5 | 1 Drawer/2 Door

Drawer is 5½" high. Butt doors are 21½" high. Includes 1 adjustable shelf. For drawer/door internal width, subtract 3" from overall width.

Dimensions: 34½" high x 24" deep.

Available Widths:

| 18 | **21** | 24 | 27 | 30 | 33 | 36 |

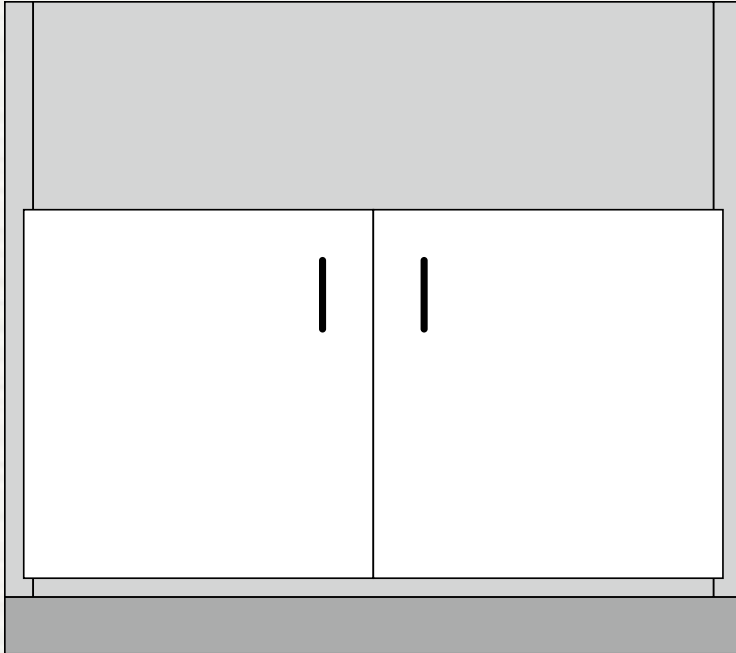
**KB-6 | Wastebasket**

Top drawer is 5½" high. Wastebasket drawer is 20½" high. For drawer/door internal width, subtract 3" from overall width.

Dimensions: 34½" high x 24" deep.

Available Widths:

| **21** |



KB-7 | Farmhouse Sink Base

Includes 11½" solid front to be notched on-site according to sink specs. Doors are 18½" high. For internal width, subtract 3" from overall width.

Dimensions: 34½" high x 21" deep.

Available Widths:

| 33 | 36 | **39** | 42 | 45 |

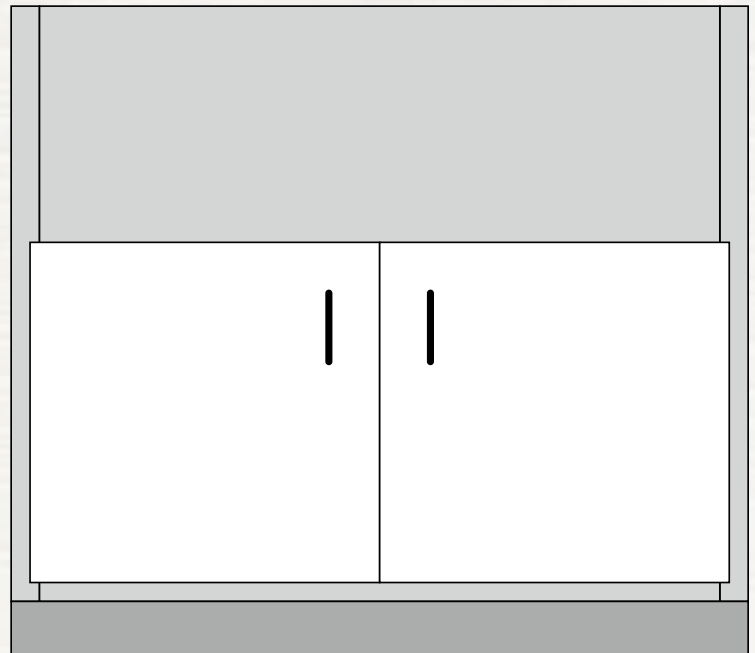
KB-8 | Grill Cabinet

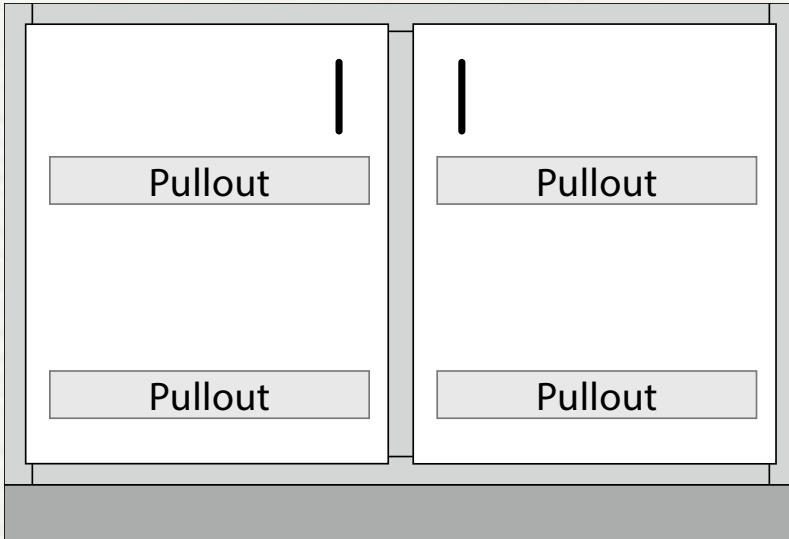
Includes 13" solid front to be notched on-site according to sink specs. Doors are 17" high. For internal width, subtract 3" from overall width.

Dimensions: 34½" high x 21" deep.

Available Widths:

| 33 | 36 | **39** | 42 | 45 |



**KBDC-1 | 2 Doors**

Includes two pullouts. Door opening is 22½" high. For door internal width subtract 4½" from overall width and divide result by two.

Dimensions: 28½" high x 24" deep.

Available Widths:

| 36 | 39 | **42** | 48 |

KBDC-2 | 6 Drawers

All drawers are 6½" high. For drawer internal width subtract 4½" from overall width and divide result by two.

Dimensions: 28½" high x 24" deep.

Available Widths:

| 36 | 39 | **42** | 48 |

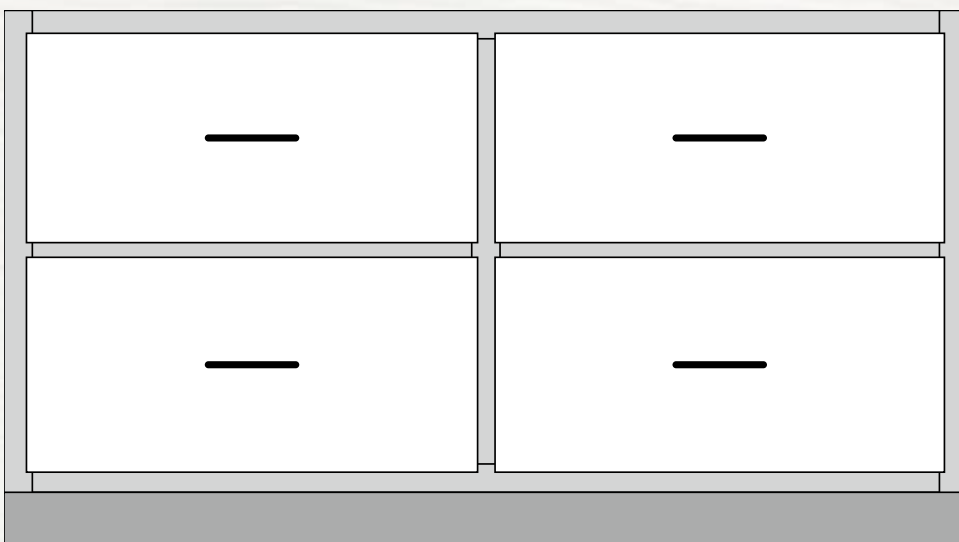
**KBDC-3 | 4 Drawers**

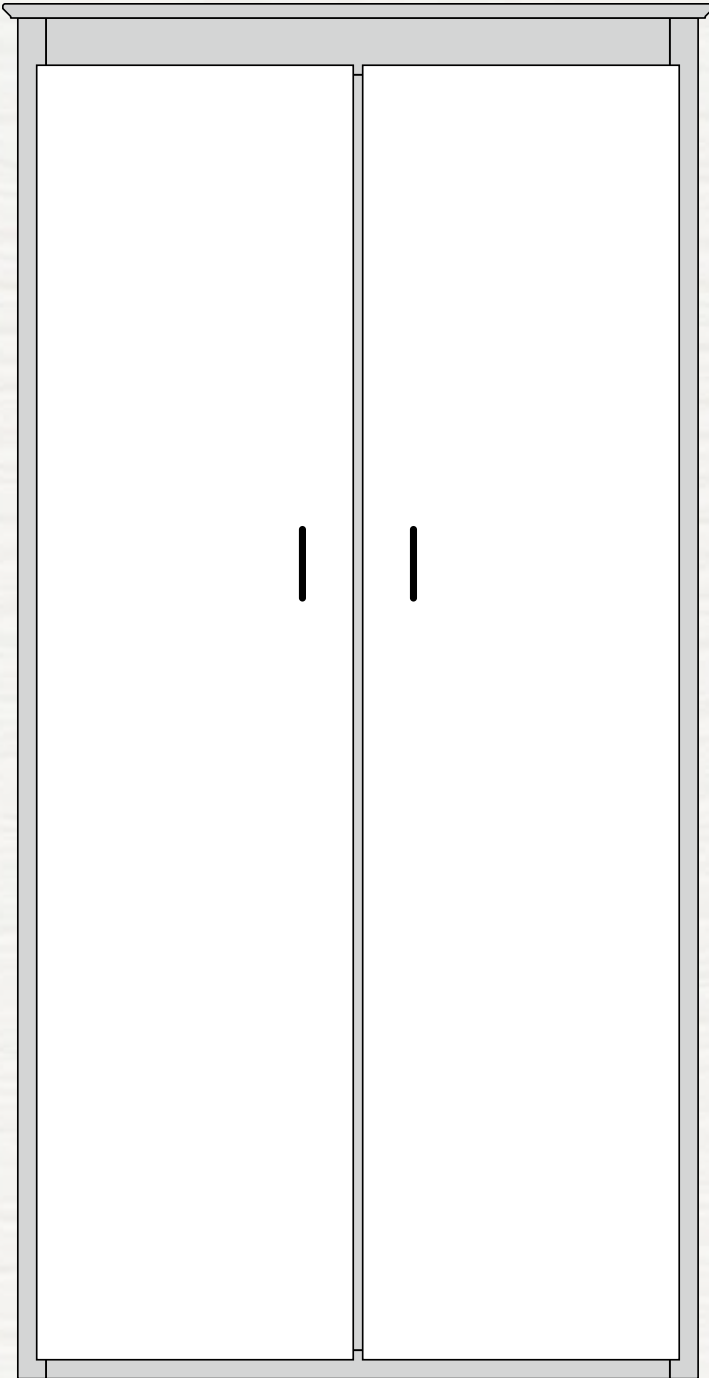
All drawers are 10½" high. For drawer internal width subtract 4½" from overall width and divide result by two.

Dimensions: 28½" high x 24" deep.

Available Widths:

| 36 | 39 | 42 | 48 | **51** | 54 | 57
| 60 |





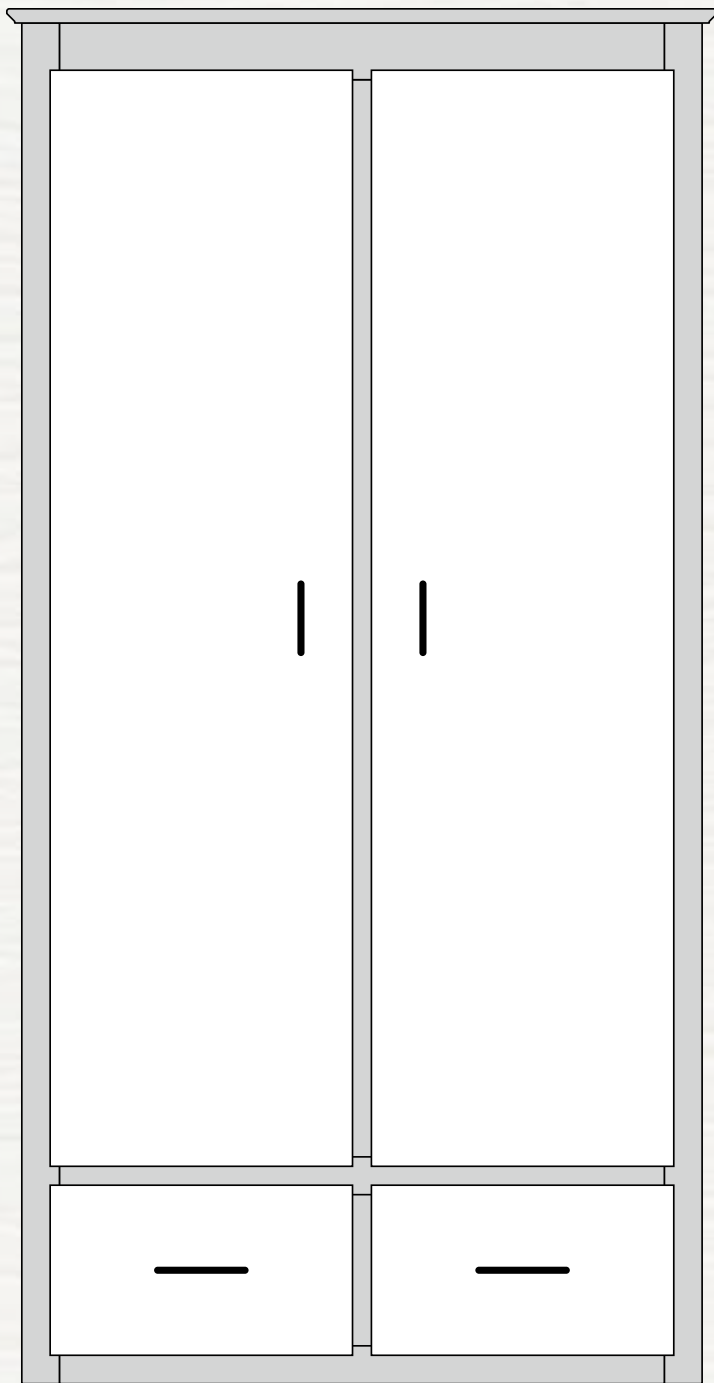
FS-1 | 2 Full Height Doors

Doors are 67" high. Includes 2 solid shelves. For door internal width, subtract 4½" from overall width and divide result by two.

Dimensions: 72" high x 24" deep.

Available Widths:

| 30 | 33 | **36** | 39 | 42 |

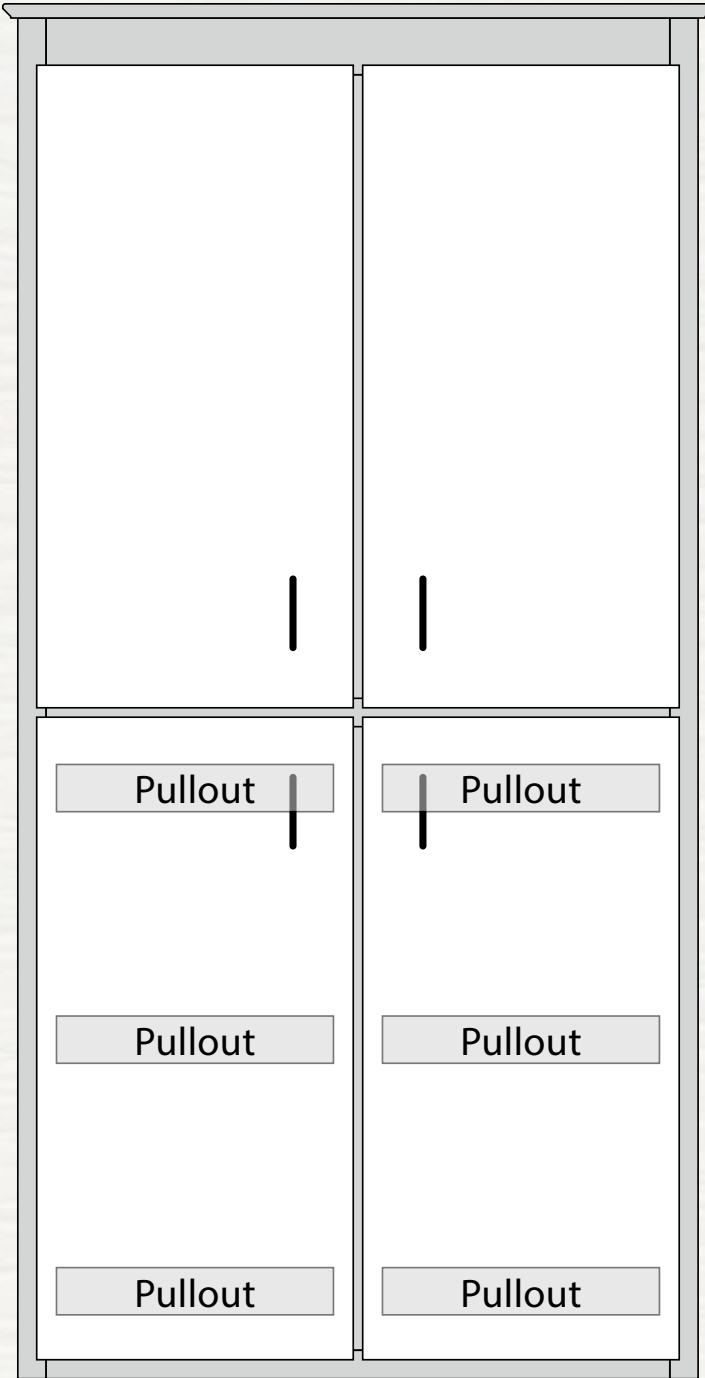
**FS-2 | 2 Doors/2 Drawers**

Doors are 57 ½" high. Drawers are 8" high. Includes 2 adjustable shelves and 1 solid shelf. For door internal width, subtract 4½" from overall width and divide result by two.

Dimensions: 72" high x 24" deep.

Available Widths:

| 30 | 33 | **36** | 39 | 42 |



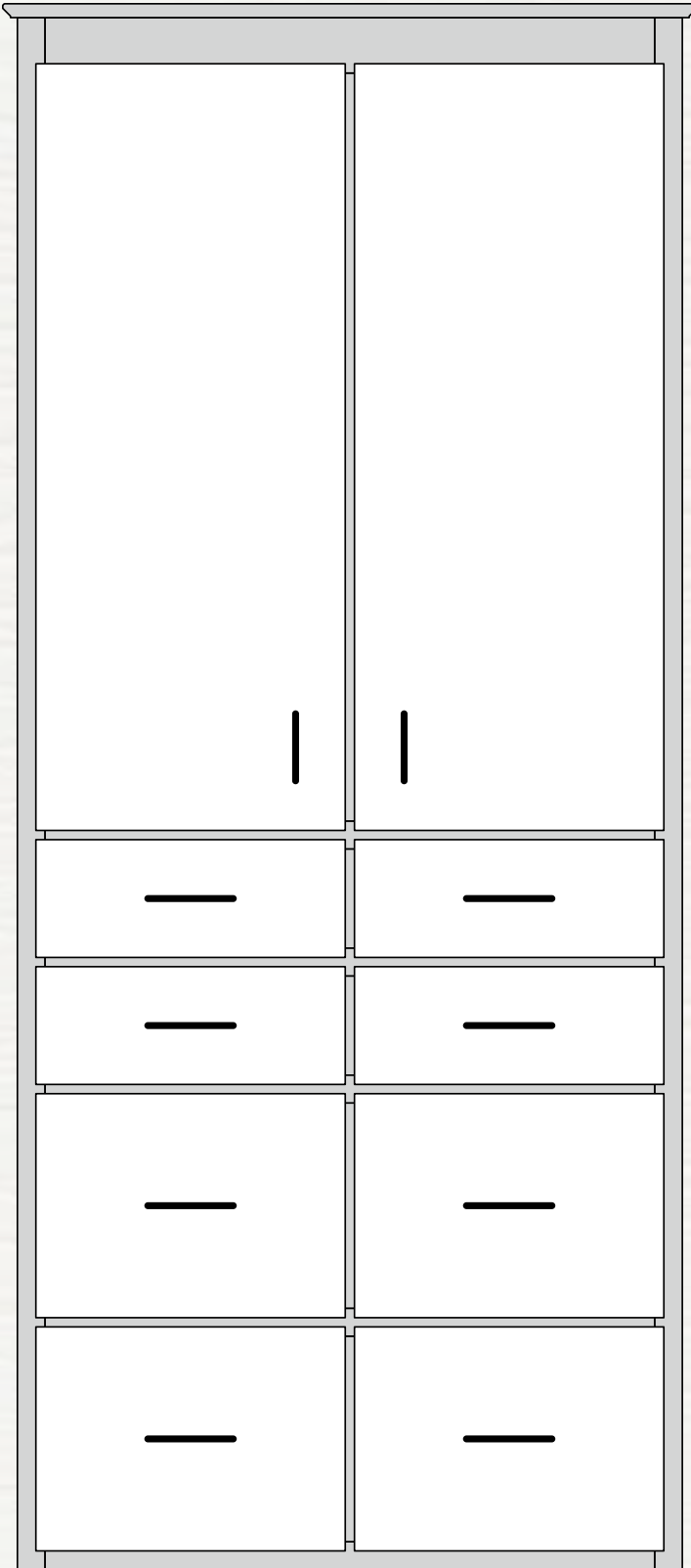
FS-3 | 4 Doors

Doors are 32 $\frac{3}{4}$ " high. Includes three pullouts and two adjustable shelves.. For door internal width, subtract 4 $\frac{1}{2}$ " from overall width and divide result by two.

Dimensions: 72" high x 24" deep.

Available Widths:

| 30 | 33 | **36** | 39 | 42 |

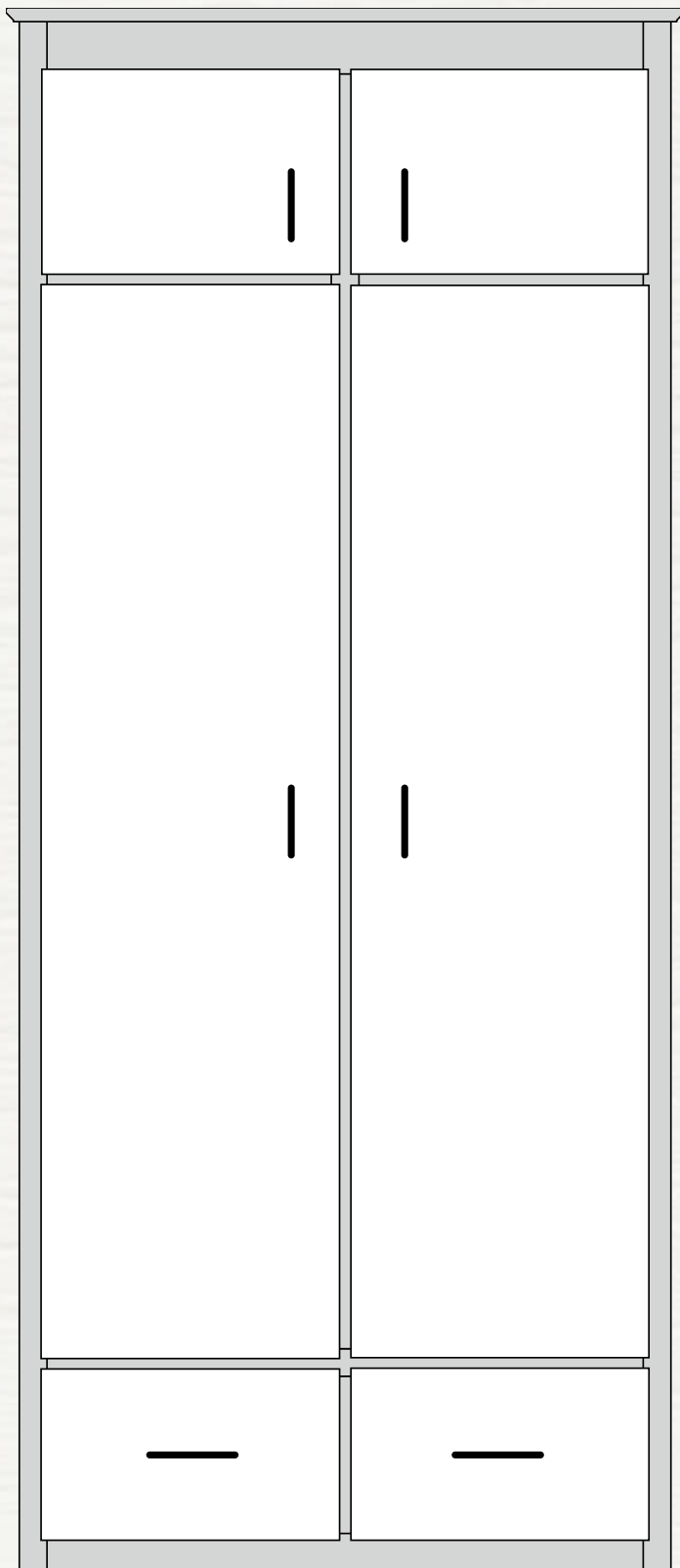
**FS-4 | 2 Doors/8 Drawers**

Doors are 40" high. Top 4 drawers are 5½" high. Bottom 4 drawers are 11" high. Includes 2 adjustable shelves. For door internal width, subtract 4½" from overall width and divide result by two.

Dimensions: 84" high x 24" deep.

Available Widths:

| 30 | 33 | **36** | 39 | 42 |



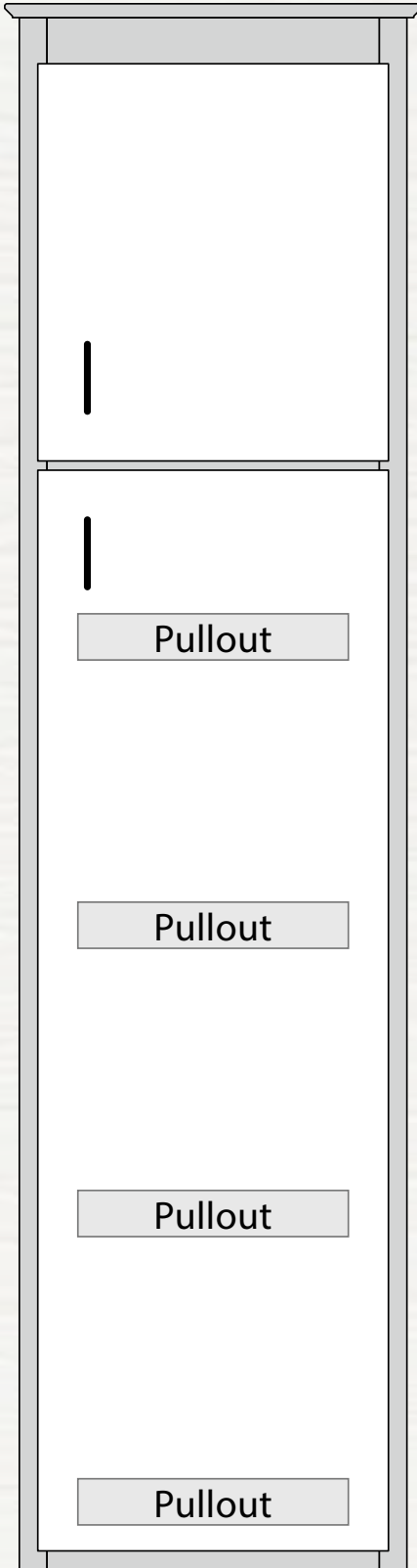
FS-5 | Coat Closet

Top door is 10½" high. Middle doors are 57" high. Drawers are 8½" high. Includes 2 adjustable shelves. For door internal width, subtract 4½" from the overall width and divide result by two.

Dimensions: 84" high x 24" deep.

Available Widths:

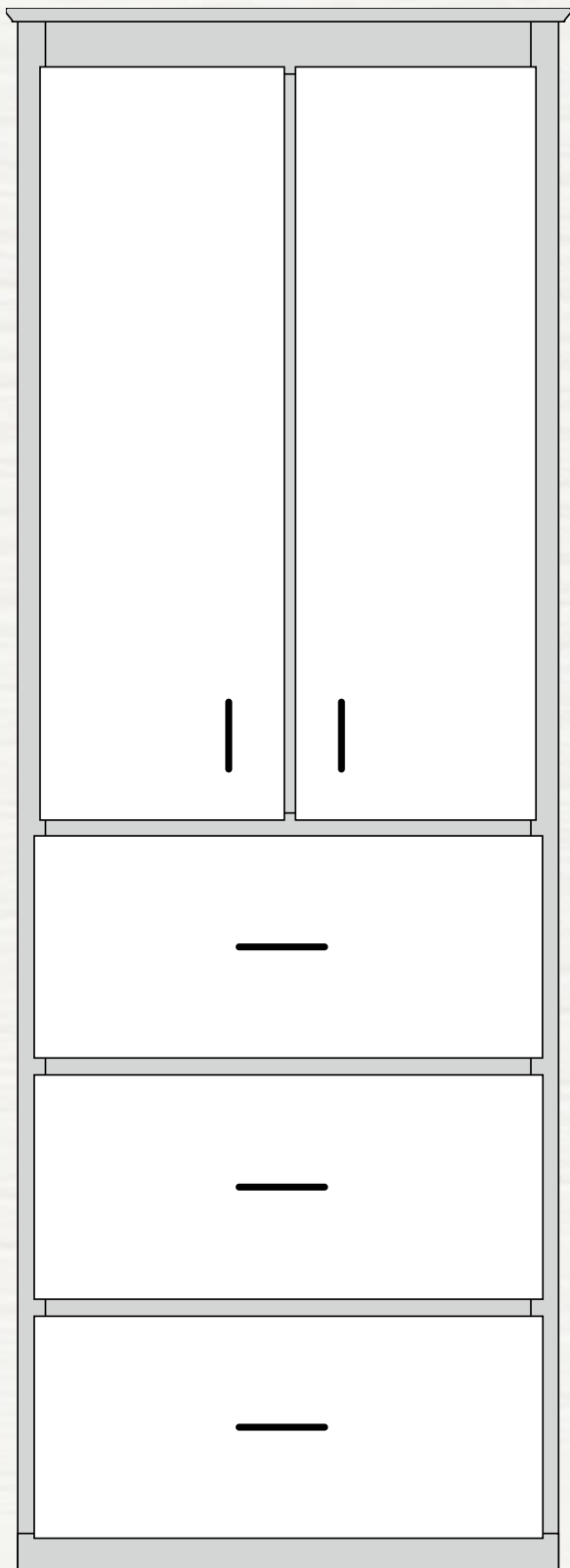
| 27 | 30 | 33 | **36** | 39 | 42 |

**FS-6 | Pantry**

Top door is 20" high. Bottom door is 57½" high.
Includes 4 pullouts. For door internal width, subtract
3" from overall width.

Dimensions: 84" high x 24" deep.

Available Widths:
| 18 | **21** | 24 | 27 |

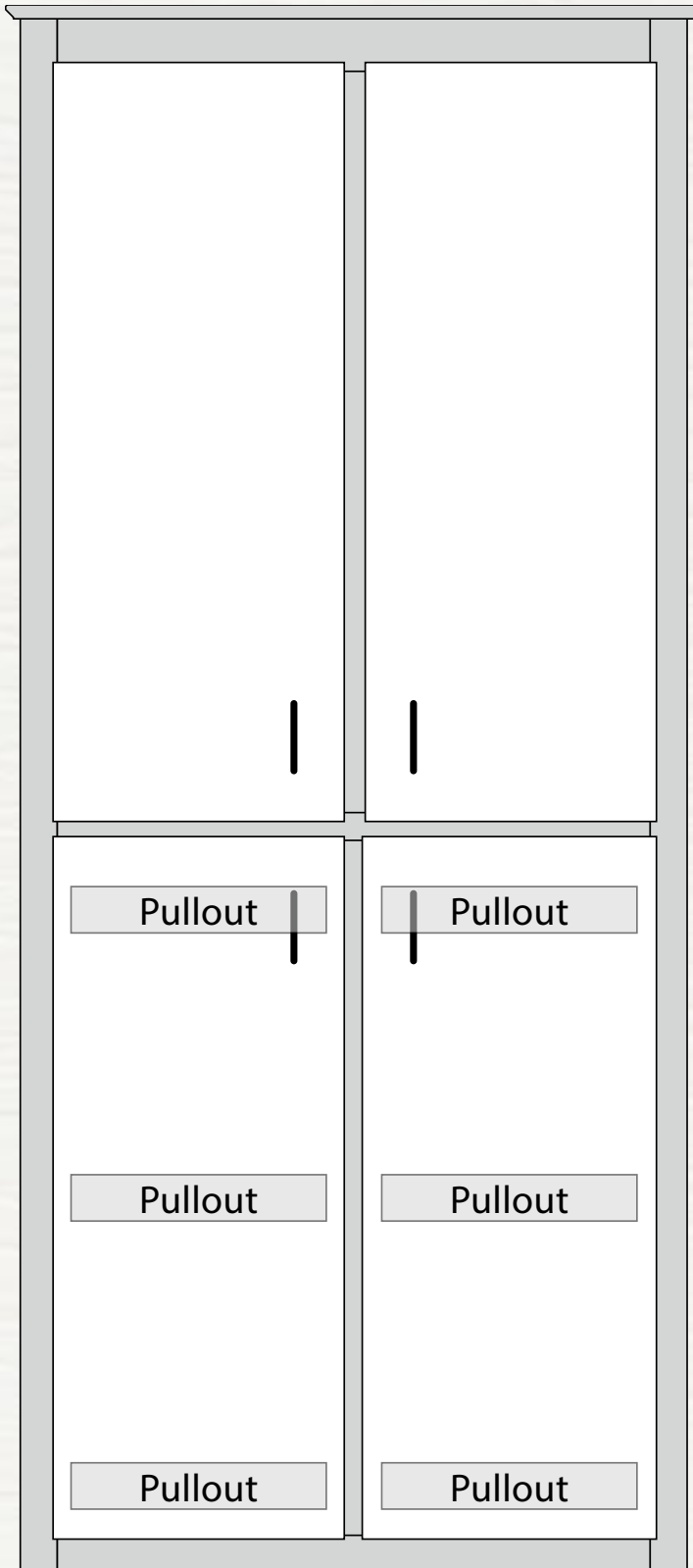


FS-7 | 2 Doors/3 Drawers

Doors are 40" high. Drawers are 11½" high. Includes 2 adjustable shelves. For door internal width, subtract 4½" from overall width and divide result by two.

Dimensions: 84" high x 24" deep.

Available Widths:
| 24 | 27 | **30** | 33 |

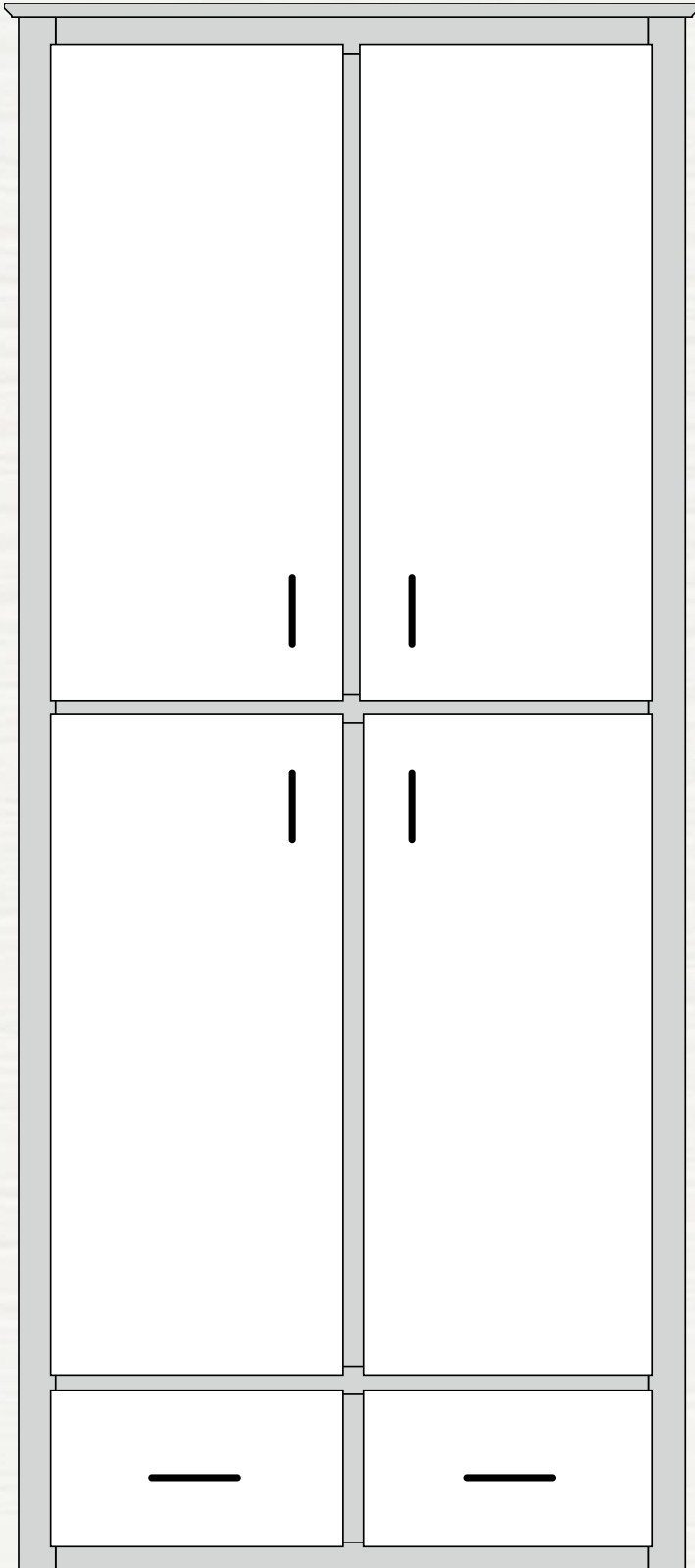
**FS-8 | 4 Doors**

Top doors are 40" high. Bottom doors are 37½" high. For door internal width subtract 4½" from overall width and divide result by two. Includes two adjustable shelves and three pullouts.

Dimensions: 84" high x 24" deep.

Available Widths:

| 30 | 33 | **36** | 39 | 42 |



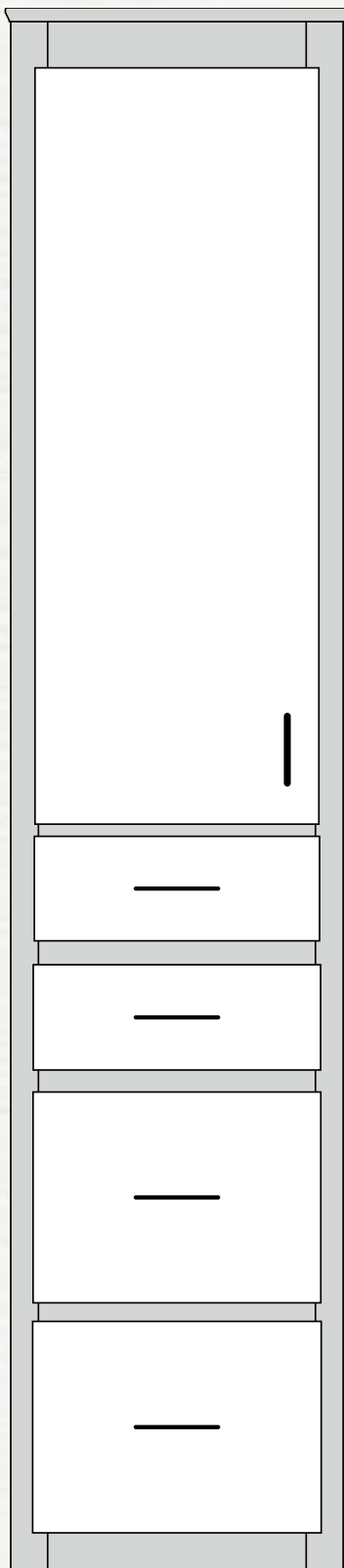
FS-9 | 4 Doors/2 Drawers

Doors are 34³/₄" high. Drawers are 8" high. Includes two adjustable shelves. For door internal width, subtract 4¹/₂" from overall width and divide result by two.

Dimensions: 84" high x 24" deep.

Available Widths:

| 27 | 30 | 33 | **36** | 39 | 42 |

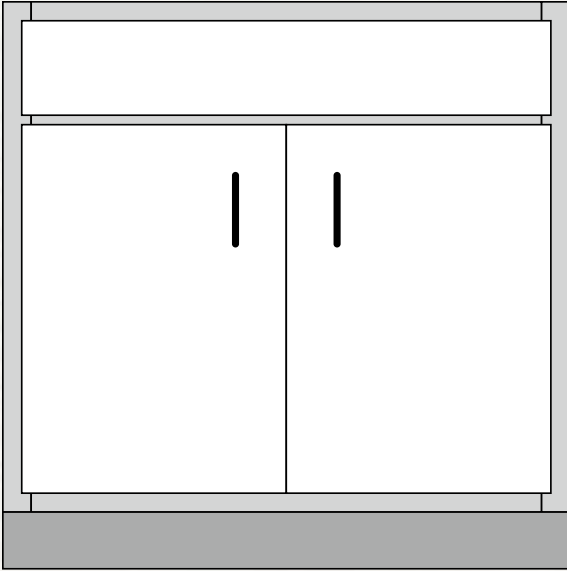
**FS-10 | 1 Door/4 Drawers**

Door is 40" high. Top drawers are 5½" high, bottom drawers are 11" high. Includes two adjustable shelves. For door internal width subtract 3" from overall width.

Dimensions: 84" high x 24" deep.

Available Widths:

| 12 | 15 | **18** | 21 | 24 |



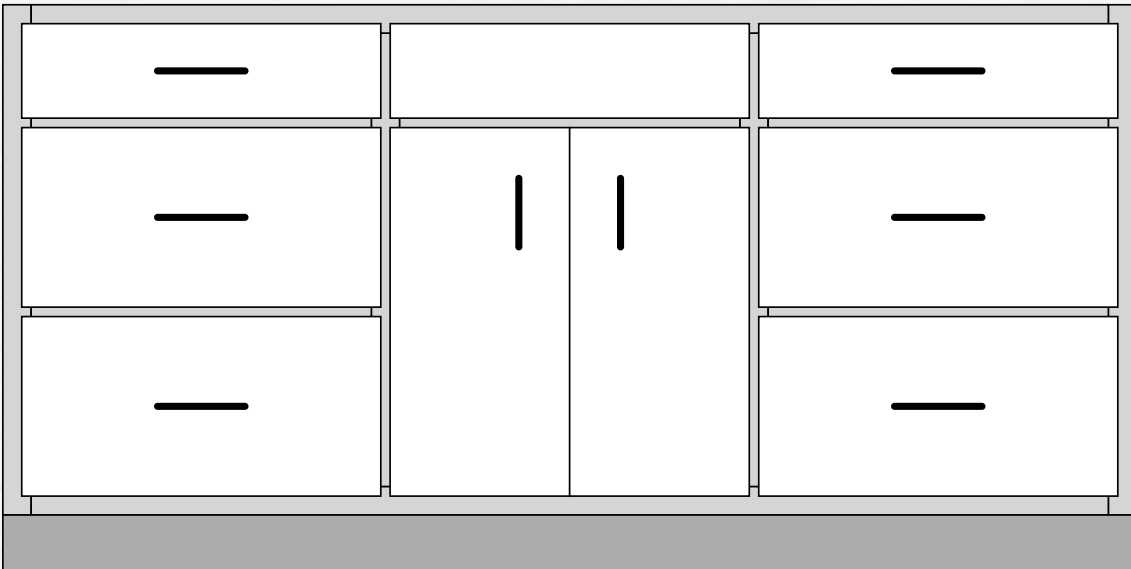
V-1 | 2 Door Sink Base

Drawer front is 4". Door is 18½". For door internal width, subtract 3" from overall width.

Dimensions: 32" high x 21" deep.

Available Widths:

| 24 | 27 | **30** | 33 | 36 |



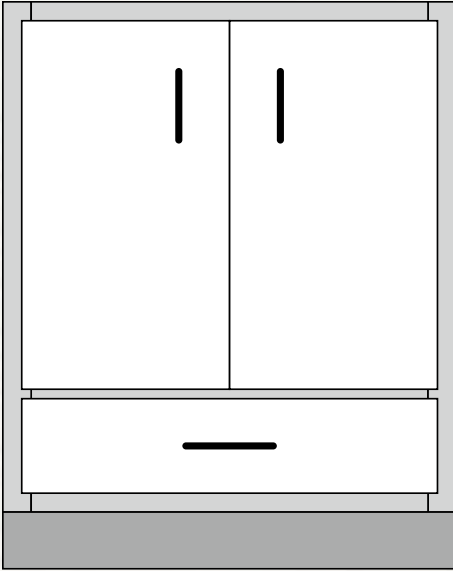
V-20 | 2 Door/6 Drawer

Constructed with (2) sets of 3-drawer banks and (1) center section with (2) doors and (1) false drawer front. Top drawers are 4" high. Bottom drawers are each 8½" high. For internal width, subtract 6" from total and divide by 3.

Dimensions: 32" high x 21" deep.

Available Widths:

| 48 | 51 | 54 | 57 | **60** | 63 | 66 | 69 | 72 |



V-3 | 2 Door with Step

Includes 4" bottom pull out step. Door opening height is 18½".
For door internal width, subtract 3" from overall width.

Dimensions: 32" high x 21" deep.

Available Widths:

| 21 | **24** | 27 |



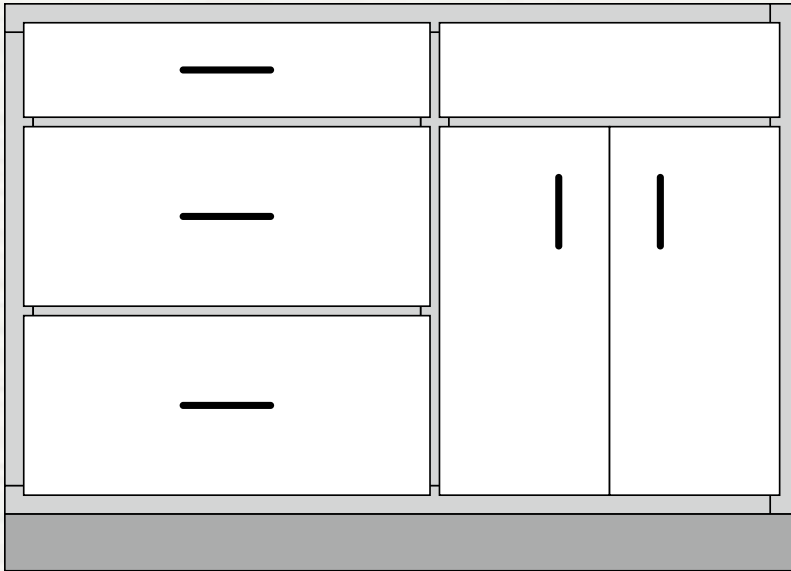
V-4 | 2 Door/6 Drawer

Constructed with (2) sets of 3-drawer banks and (1) section with (2) doors and (1) false drawer front. Top drawers are 4" high. Bottom drawers are each 7½" high. For internal width, subtract 6" from overall width and divide by 3.

Dimensions: 32" high x 21" deep.

Available Widths:

| 48 | 51 | 54 | 57 | **60** | 63 | 66 | 69 | 72 |



V-5 | 2 Door/3 Drawer

Constructed with (1) 3-drawer bank and (1) section with (2) doors and (1) false drawer front. Top drawer is 4" high. Bottom drawers are each 8½" high. For internal width, subtract 4½" from overall width and divide by 3.

Dimensions: 32" high x 21" deep.

Available Widths:

| 36 | 39 | **42** | 45 |



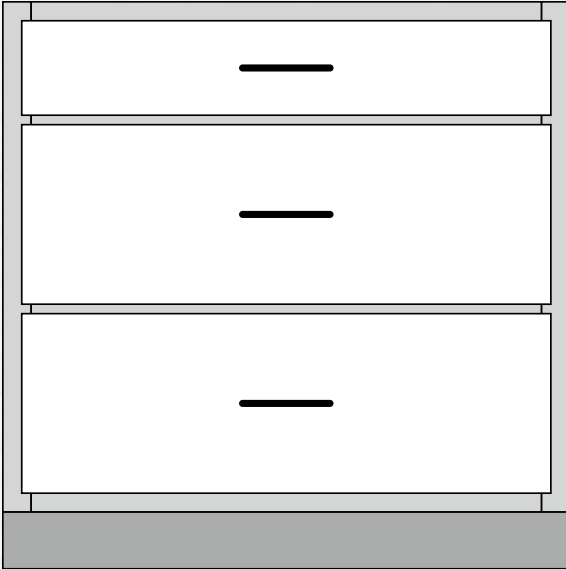
V-6 | 2 Door/6 Drawer

Constructed with (2) sets of 3-drawer banks and (1) section with (2) doors and (1) false drawer front. Top drawers are 4" high. Bottom drawers are each 7½" high. For internal width, subtract 6" from overall width and divide by 3.

Dimensions: 32" high x 21" deep.

Available Widths:

| 48 | 51 | 54 | 57 | **60** | 63 | 66 | 69 | 72 |

**V-7 | 3 Door**

Top drawers are 4" high. Bottom two drawers are 7½" high. For internal width, subtract 3".

Dimensions: 32" high x 21" deep.

Available Widths:

| 18 | 21 | 24 | 27 | **30** | 33 | 36 |

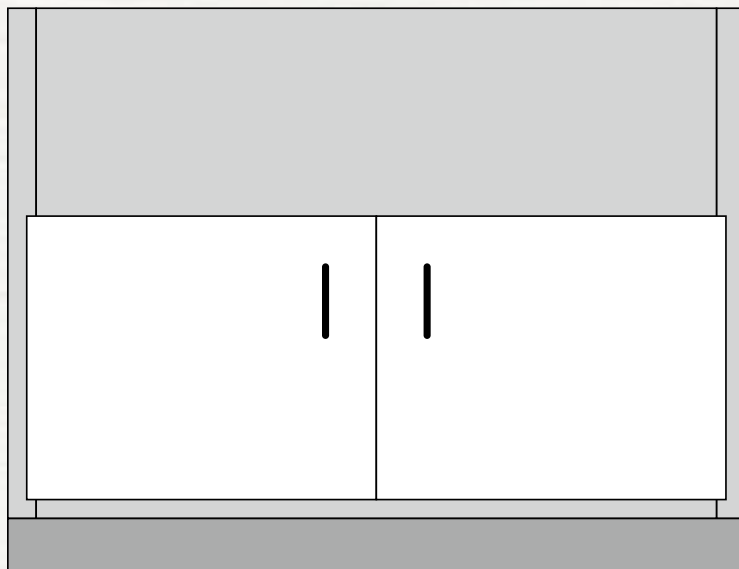
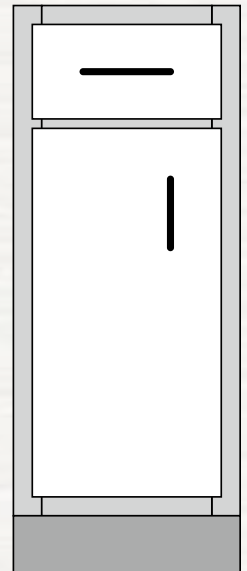
V-8 | 1 Door/1 Drawer

Includes 1 drawer and 1 door. Drawer height is 4". Door internal height is 18½". Please specify knob location. For door internal width, subtract 3" from overall width.

Dimensions: 32" high x 21" deep.

Available Widths:

| 9 | 12 | 15 |

**V-9 | Farmhouse Sink Base**

Includes 11½" solid front to be notched on-site according to sink specs. Doors are 14" high. For internal width, subtract 3" from overall width.

Dimensions: 32" high x 21" deep.

Available Widths:

| 24 | 27 | **30** | 33 | 36 |



All portable grill cabinets will have an aluminum undercarriage frame and appropriate swivel locking casters. These cabinets are designed for charcoal grills, we can also do portable gas grill cabinets.





PGC-1 | 6 Doors

Side cabinets include one pullout on top and one adjustable shelf. Side cabinet doors are 25¼" high. Below grill doors are 12⅞" high.

Dimensions: 30" high x 30" deep. (With undercarriage and wheels, height is 33" plus top and grill.)

Available Widths:

| 60 | 63 | 66 | 69 | 72 | 75 | 78 | 81 | 84 | 87 | **90** | 93 |

PGC-2 | 4 Doors

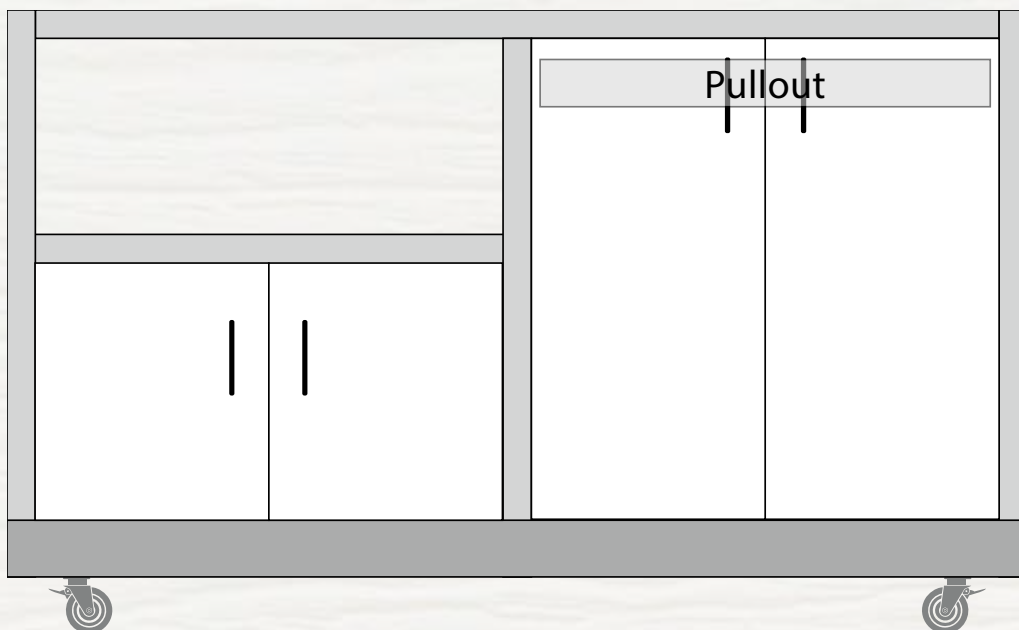
Side cabinets include one pullout on top and one adjustable shelf. Side cabinet doors are 25¼" high. Below grill doors are 12⅞" high.

Dimensions: 30" high x 30" deep. (With undercarriage and wheels, height is 33" plus top and grill.)

Available Widths:

| 57 | 60 | **63** | 66 | 69 |





PGC-3 | 4 Doors

Side cabinets include one pullout on top and one adjustable shelf. Side cabinet doors are 25¼" high. Below grill doors are 12⅞" high.

Dimensions: 30" high x 30" deep. (With undercarriage and wheels, height is 33" plus top and grill.)

Available Widths:

| 45 | 48 | 51 | **54** | 57 | 60 | 63 | 66 |

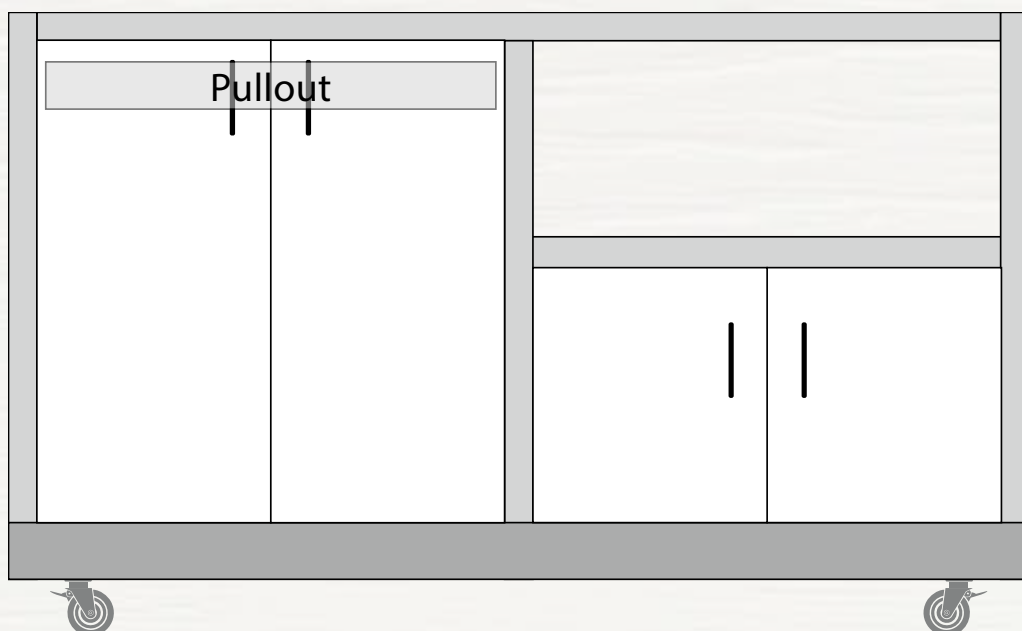
PGC-4 | 4 Doors

Side cabinets include one pullout on top and one adjustable shelf. Side cabinet doors are 25¼" high. Below grill doors are 12⅞" high.

Dimensions: 30" high x 30" deep. (With undercarriage and wheels, height is 33" plus top and grill.)

Available Widths:

| 45 | 48 | 51 | **54** | 57 | 60 | 63 | 66 |





Kitchen





Heartland
POLYMER CABINETS

8200 West 700 South | Topeka, IN 46571 | (260) 593-3101

Fax: (260) 593-3020 | Email: hpc@emailprint.net

Hand-Crafted Interior & Exterior Weatherproof Cabinets & Furniture